

SECTION SIX MAINTENANCE AND SERVICE INSTRUCTIONS

HYDRAULIC STABILIZERS

INTRODUCTION

INSTALLATION

Stabilizer Frame Mounting	6-1
Installing Stabilizer Legs and Cylinders	6-2
Mounting the Control Valve	6-3
Connecting Hydraulic Lines	6-4
Testing the System	6-5

OPERATION

Lowering the Stabilizers	6-5
Retracting the Stabilizers	6-5

MAINTENANCE

Daily Maintenance	6-6
Weekly Maintenance	6-6
Annual Maintenance and Preparation for Storage	6-6

PARTS LIST

Cylinder Rigging Parts	6-7
Stabilizer Assembly Parts	6-8



362 South Main, Clearfield, UT 84015
801-773-1311 * 800-453-2446 * Fax 801-773-8608

INTRODUCTION

Cleasby Conveyors, (CM) recommends stabilizers be installed on all trucks with mounted conveyors. Stabilizers provide (1) substantially improved stability under all conditions; (2) permit use of the conveyor when the ground is uneven; and (3)

provide additional margins of safety against the truck tipping over. All of this adds up to safer operation and avoiding the possibility of injury or damage to equipment.

PLEASE READ AND FOLLOW THE INSTALLATION PROEDURE BELOW

INSTALLATION

Stabilizer Frame Mounting

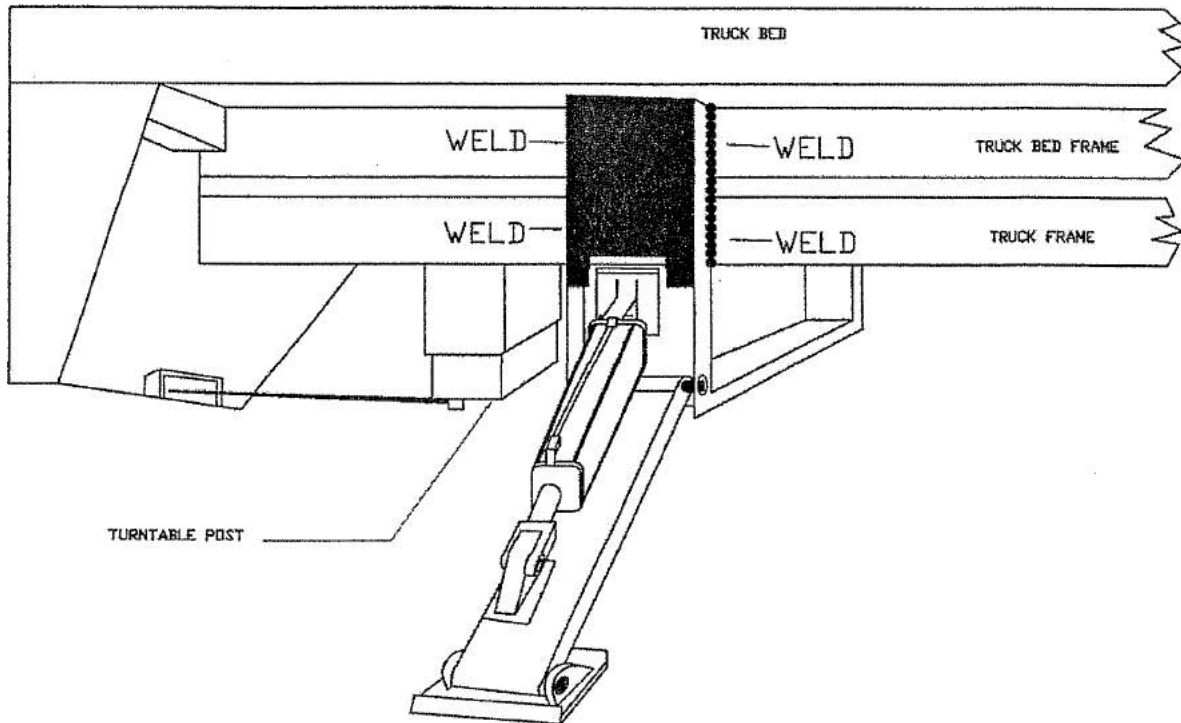
(See Figure 7-1)

- 1.) Remove and discard the two knock-out braces which were inserted for purposes of shipping.
- 2.) With the truck unloaded and located on level ground, slide the open end of the stabilizer frame upward over the truck chassis forward of the turntable post.
- 3.) Block-up the stabilizer frame with the slides vertical and the bottom of the frame approximately twelve (12) inches off the ground (this may vary depending upon the type of truck). The rear side of the frame should be 6 to 12 inches forward of the turntable post. Adjust position to avoid interference with attachments to the chassis frame. The bottom of the frame must be level in all directions.

- 4.) Weld the stabilizer frame to the chassis frame and to the bed frame, if possible, using full weld beads. Use eight beads with a minimum throat of 1/4 inch (See Figure 7-1).

(CM) recommends shielded arc welding to insure adequate penetration. If only MIG welding is available, use only at high heat. Only certified welders should perform welding.

- 5.) Let cool. Clean weld and paint as necessary.
- 6.) Select a highly visible spot in the vehicle cab, clean the area thoroughly and apply the warning label supplied, **(See Section One, Warnings and Cautions, Labels to Be Placed by you or the Installer).**



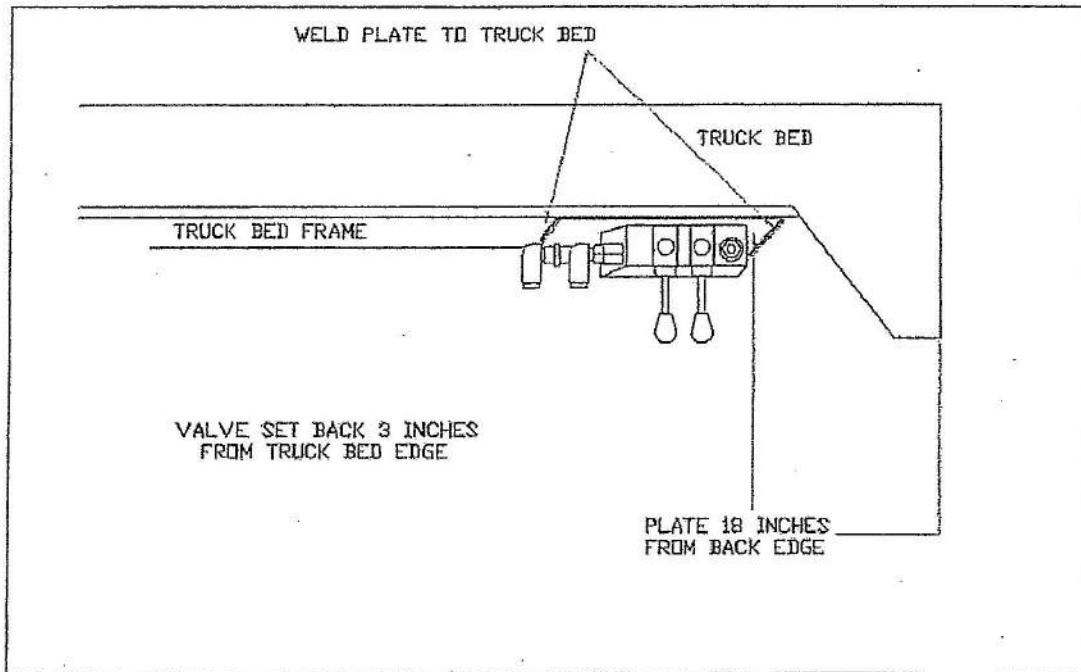
Installing Stabilizer Legs and Cylinders

1.) Connect the stabilizer legs to the stabilizer frame (See Figure 6-1, this page and Parts List, beginning hereafter) with straight 1"x 7 1/4 "pins. Place washers on each end of the pins and secure with cotter pins.

2.) Mount a stabilizer foot on each stabilizer leg with headed 1"x7" pins. Place a washer over the end of each of the pins and secure with cotter pins.

3.) Anchor the tube end of the cylinders to the stabilizer frame with the cylinder pins and secure with the hardened cotter pins provided.

4.) Connect the rod ends of the cylinders to the stabilizer legs with cylinder pins and secure with the hardened cotter pins provided.



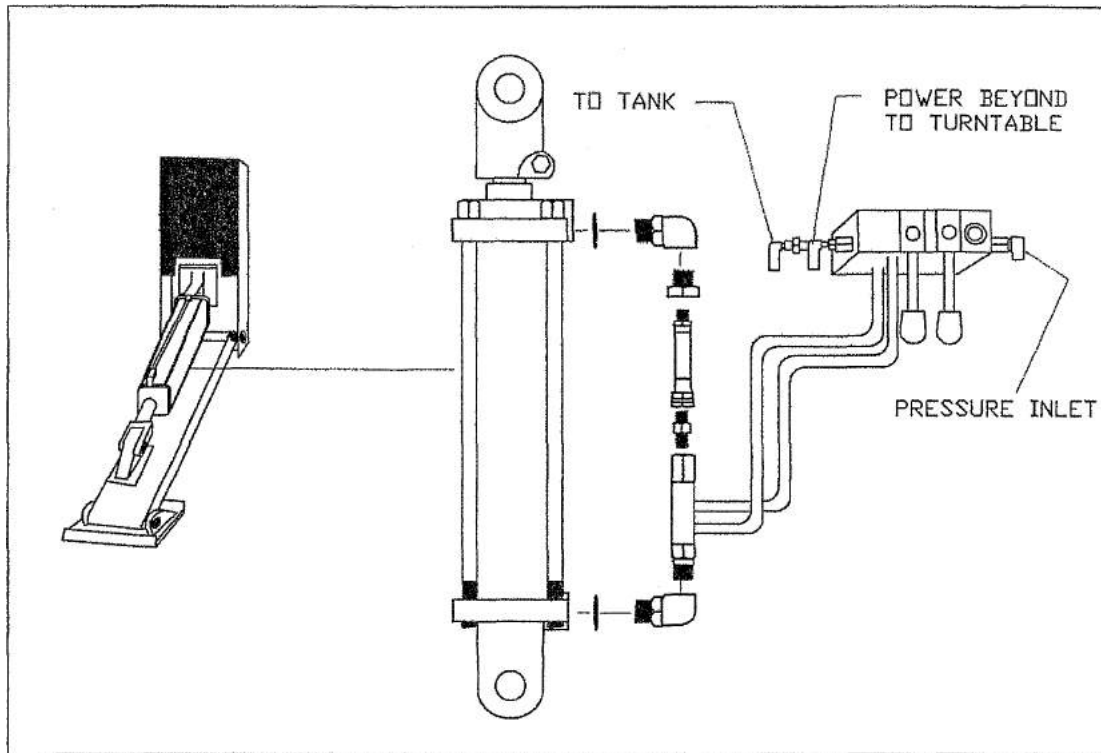
Mounting the Control Valve

1.) Position the control valve bracket (See Figure 6- 2) on the left (driver's side) of the truck bed frame. Locate the rear edge of the plate (single bolt) 12 inches from the rear of the truck bed. The two bolt side of the plate should be toward the front. The edge of the plate should be about 3 inches in from the edge of the truck bed.

2.) Clamp or hold in place and weld in place with beads along the front and back sides of the plate.

3.) Clean and paint as needed

4.) Install the control valve to the mounting plate with flat washer, lock washers and nuts.



Connecting Hydraulic Lines

- 1.) Connect hose from tube end of cylinder on right side of truck to rear port farthest from control handle (See Figure 6-3, Hose No. 1).
- 2.) Connect hose from rod end of cylinder on right side of truck to rear port nearest control handle (Hose No. 2).
- 3.) Connect hose from tube end of cylinder on left side of truck to front port farthest from control handle (Hose No. 3).
- 4.) Connect hose from rod end of cylinder on left side of truck to front port nearest control handle (Hose No. 4).
- 5.) Connect hose from the port farthest from the control handles (on the front side of the valve (return port) to a Tee in the line from the turntable return to the hydraulic tank return (Hose No. 5).

6.) Connect hose from port nearest control handles on front side of valve (power beyond port) to pressure inlet port on turntable (Hose No. 6).

7.) Connect hose from port on rear side of valve to pressure port on hydraulic pump (Hose No. 7).

8.) Weld hooks to the outer edge of the bed and fasten about 12 inches of the $\frac{1}{4}$ inch chain to the hinge pin for the stabilizer foot. The chain will secure the stabilizers while traveling.

Testing the System

1.) With the truck engine operating at idle, engage the P.T.O. and slowly operate the control valves to bleed the air from the hydraulic system. Recheck hydraulic oil level in reservoir. Fill as required.

2.) Inspect all connections for leaks.

3.) Raise and lower each stabilizer several times.

4.) Be sure the conveyor hydraulic system operates correctly.

OPERATION

Stabilizers increase the stability of truck-mounted conveyors. Stabilizers also can help in leveling the truck on slightly irregular ground. If ground is soft, place blocking under the stabilizer feet to spread the load.

Lowering the Stabilizers

3.) Set up a safety zone around the truck at least 10 feet beyond the end of the conveyor and extending up twice the length of the conveyor.

4.) Set the brakes on the truck and place the transmission in neutral. Engage the power takeoff and run the engine at idle speed.

5.) Unhook the chains supporting the stabilizer legs.

6.) Push down on the rear control handle to lower the right side stabilizer. Continue to lower the stabilizer until the truck rises slightly.

7.) Push down on the front control handle to lower the left stabilizer until the truck bed is level.

1.) If the ground is soft, place planks or blocks under the stabilizer feet for greater stability.

2.) Extend the stabilizers only enough to stabilize the truck. Do not raise the truck wheels clear of the ground.

Retracting the Stabilizers

1.) Stow the conveyor in its rack on the backboard at the front of the bed.

2.) Push up on the rear control handle to raise the right stabilizer. Raise it until the stabilizer retracts all the way. Secure the stabilizer by hooking the chain on the stabilizer to the hook on the bed.

3.) Push up on the front control handle to raise the left stabilizer. Raise it until the stabilizer fully retracts. Secure it by hooking the chain on the stabilizer to the hook on the bed.

4.) Stop the engine and disengage the power takeoff.

NOTICE

NEVER DRIVE THE TRUCK OR RACE THE ENGINE WHILE THE P.T.O. IS ENGAGED. THE PUMP IS INSTALLED TO OPERATE AT THE CORRECT SPEED AND TO PRODUCE SUFFICIENT OIL FLOW WHEN THE TRUCK IS IDLING. IF THE TRUCK IS DRIVEN OR THE MOTOR RACED WHILE THE PTO IS ENGAGED, THE PUMP MAY BE DAMAGED OR THE DRIVE LINE MAY FLY APART

MAINTENANCE

1.) Check to see that cotter pins or hairpin clips secure all hinge pins.

2.) Inspect hydraulic hoses for damage or leaks.

Weekly Maintenance

1.) Check to see that cotter pins or hairpin clips secure all hinge pins. Check pins for wear.

2.) Inspect hoses and fittings for damage or leaks.

3.) Check and tighten all bolts and nuts.

Annual Maintenance and Preparation for Storage

1.) Check cylinder seals and valve seals for leakage.

2.) Tighten bolts securing cylinder ends.

3.) Replace any worn hinge pins.

4.) Before storing, retract stabilizers to retract cylinder rods. Coat exposed rods with hydraulic fluid.

...See next page for Parts List

HYD STABILIZER PARTS IDENTIFICATION

EFFECTIVE JUNE 15, 2011

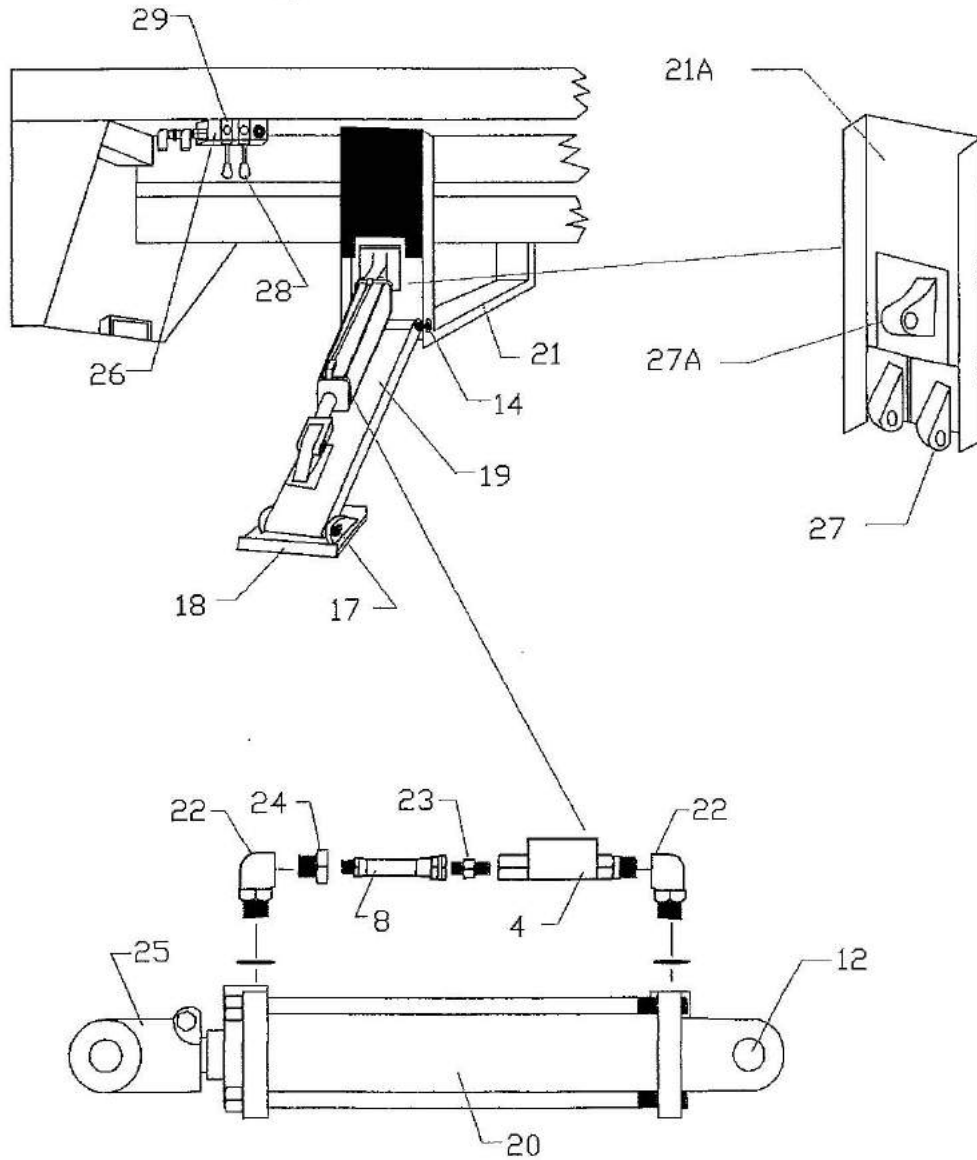
ITEM #	PART #	DESCRIPTION
4	12MDB	CHECK VALVE WITH FITTINGS
8	11BB	1/8" X 7" HYDRAULIC HOSE
12	14DCA	1" DIA. CYLINDER PIN W/COTTER
14	01CLAH	1" X 7 1/4" PIN (TOP OF LEG)
15	05LH	1" FLAT WASHER
16	06FAE	3/16" X 2 1/2" COTTER
17	01CLAG	1" X 7 1/4" PIN (FOR STABILIZER FOOT)
18	01BGAC	STABILIZER FOOT ONLY
19	19ZA	STABILIZER LEG ONLY
19A	19ZAB	STABILIZER LEG ONLY WITH ALL HYD PARTS
20	14BC	3 X 10 HYDRAULIC CYLINDER
20A	14CB	9200 SEAL KIT FOR 3 X 10 CYLINDER
21	19ZB	STABILIZER U-FRAME ONLY
21A	19ZBA	ONE SIDE ONLY FOR STABILIZER U-FRAME
22	10EF	8-3/8 AEOG FITTING
23	10ERA	4-F50X FITTING
24	10DDA	3/8" X 1/8" BUSHING
26	12BBA	TWO SPOOL STABILIZER VALVE
26A	12BGC	SEAL KIT FOR TWO SPOOL VALVE
27	19ZD	1/2" EARS AND PLATE ONLY FOR U-FRAME
27A	19ZE	1" EAR ONLY FOR U-FRAME
28	12OB	STANDARD HANDLE
29	12PA	STANDARD HOUSING

CLEASBY CONVEYORS

362 SOUTH MAIN, CLEARFIELD, UT. 84015

800-453-2446 * 801-773-1311 * FAX 801-773-8608

**CLEASBY CONVEYORS
HYDRAULIC STABILIZER
12-12-05**



**CLEASBY CONVEYORS
362 S. MAIN, CLEARFIELD, UT 84015
801-773-1311 * 800-453-2446 * FAX 801-773-8608**