

A

B

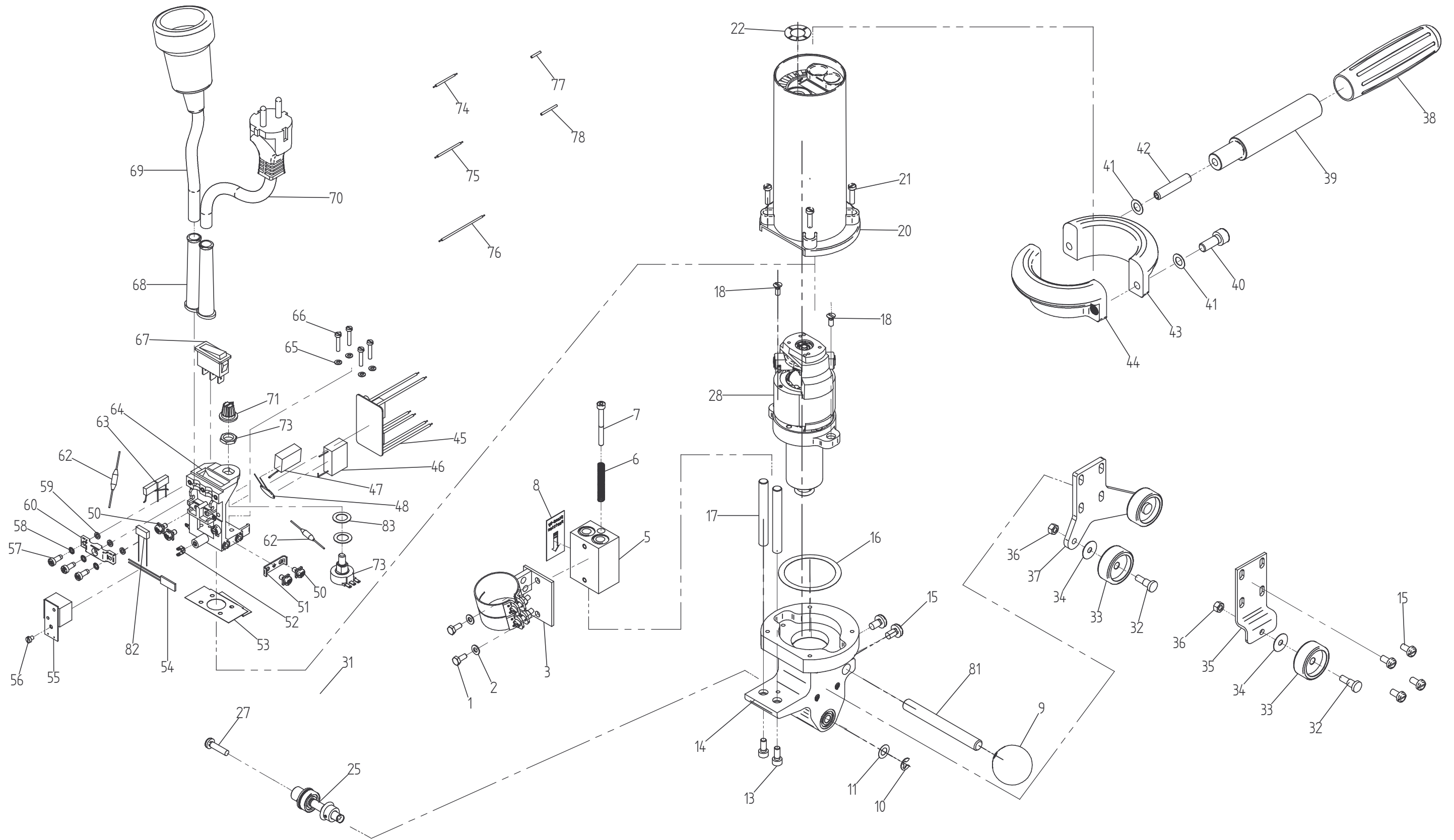
C

D

1

2

3



Werkstoff:		Volumen:		
Datum	Gezeichnet	<b>Antriebseinheit (TriacDrive)</b>		
07.03.2003	F. Gerig			
Datum	Geprüft	Format	Masstab	Zeichnungs-Nr.
03.06.2003	R. Portmann	A3	1:2	10927
<b>LEISTER</b> Process Technologies CH-6060 Sarnen				Index
				<b>B</b>

<b>Spare Parts List: TRIAC DRIVE 0246</b>					
<b>Drawing-No 10927B</b>					
<b>Pos</b>	<b>Order No</b>	<b>Qty</b>	<b>Article</b>		<b>USD</b>
<b>Drawing-No 10927B</b>					
1	104.234	2	Hexagon set screw M4 x 10		2.00
2	100.139	2	Washer M4 4.3/9/0.8		2.00
3	115.243	1	Support		108.00
5	115.178	1	Lifting sledge complete		270.00
6	115.213	1	Pressure spring $\varnothing 5 \times \varnothing 6.1 \times 38.5$		4.00
7	112.503	1	Cheese head screw M4 x 40		3.00
8	115.254	1	Label "Stand-by position"		6.00
9	115.496	1	Tool rest		11.00
10	115.175	1	Circlip for shaft $\varnothing 5$		2.00
11	103.227	2	Shim ring 7/13/0.2		2.00
13	100.373	2	Cheese head screw M5 x 12		3.00
14	115.171	1	Housing complete		324.00
15	100.175	7	Slotted pan head screw M5 x 10		2.00
16	115.203	1	Shim ring 45/55/0.2		2.00
16	115.204	1	Shim ring 45/55/0.1		2.00
17	115.172	2	Shaft		24.00
18	100.325	2	Countersunk screw M4 x 10		3.00
20	100.431	1	Handle		68.00
21	100.442	4	Cheese head screw M4 x 16		3.00
22	115.248	1	Scale Triac Drive		6.00
25	115.174	1	Driving axle complete		168.00
27	100.421	1	Slotted pan head screw M5 x 20		6.00
28	115.163	1	Motor DCL 52/33, HA K 230V, with gearing		700.00
28	115.270	1	Motor DCL 52/33, HA K 120V, with gearing		700.00
	100.429	2	Carbon brush 5 x 6 x 14 with lead (230/200V)		6.00
	100.430	2	Carbon brush 5 x 6 x 14 with lead (120/100V)		6.00
32	115.198	3	Fitted shoulder screw M6 x 8, with socket head		7.00
33	114.682	3	Supporting wheel		28.00
34	100.393	3	Distance disc 5/17/0.5		4.00
35	115.195	1	Support		28.00
36	100.377	3	Hexagon nut M5/0.8d		3.00
37	115.194	1	Double support carrier roller		54.00
38	100.570	1	Handle $\varnothing 30 \times 100 / \varnothing 22$		11.00
39	115.257	1	Guide handle		28.00
40	100.871	1	Cheese head screw M8 x 20		3.00
41	100.351	2	Shim ring 8/14/0.5		3.00
42	103.348	1	Set screw M8 x 40		4.00
43	115.258	1	Round handle		40.00
44	115.259	1	Round handle		46.00
45	102.215	1	Electronic circuit board DS 85, 240/230/200V		80.00
46	100.454	1	Interference capacitor 0.33uF/250V		9.00
47	100.603	1	RC- combination 0.47uF + 470Ohm		16.00
48	115.433	1	Varistor		6.00
50	100.266	4	Fillister head screw M4 x 8		5.00
51	115.212	1	Grounding clamp		10.00
52	100.216	4	Soldering tag		2.00
53	102.316	1	Insulating paper (UL)		8.00
54	100.471	1	Temperature limit switch		24.00
55	102.317	1	Choke coil complete (UL)		80.00
56	100.041	4	Cheese head screw M3 x 4		3.00
57	100.610	3	Cheese head screw M3 x 10		3.00

<b>Spare Parts List: TRIAC DRIVE 0246</b>				
<b>Drawing-No 10927B</b>				
<b>Pos</b>	<b>Order No</b>	<b>Qty</b>	<b>Article</b>	<b>USD</b>
58	100.209	3	Serrated lock washer M3 3.2/6/0.4, internal teeth	2.00
59	100.210	3	Washer M2.5 2.7/5.5/1	2.00
60	114.755	1	Strain relief	5.00
62	100.809	2	Choke coil 10uH/0.8A	7.00
63	100.452	2	Capacitor 2200pF	12.00
64	115.211	1	Terminal hoop	46.00
65	100.446	4	Spring ring M3 3.25/6.2/0.8	2.00
66	100.445	4	Cheese head screw M3 x 16	3.00
67	100.605	1	Rocker switch illuminated	24.00
68	100.444	2	Cord guard Ø 9.6 x 75mm	8.00
69	115.311	1	Power supply cord 3 x 1.5mm <sup>2</sup> x 0.3m, with grounded US-receptacle	28.00
70	115.312	1	Power supply cord 3 x 1.5mm <sup>2</sup> x 2.7m, with grounded US-plug	28.00
71	107.603	1	Potentiometer knob red	6.00
73	102.233	1	Potentiometer 100kOhm	44.00
74	100.608	1	Temperature resistant wire 0.5mm <sup>2</sup> x 29mm, black	2.00
75	100.606	1	Temperature resistant wire 0.5mm <sup>2</sup> x 34mm, blue	2.00
76	100.607	1	Temperature resistant wire 0.5mm <sup>2</sup> x 56mm, black	2.00
77	107.981	2	Insulating tube ø 1 x 0.4 x 11mm	2.00
78	104.158	3	Insulating tube ø 1 x 0.4 x 19mm	2.00
81	115.461	1	Shaft	6.00
82	100.456	1	Interference capacitor 0.001uF/250V	9.00
83	101.155	2	Shim ring 10/16/0.5	2.00